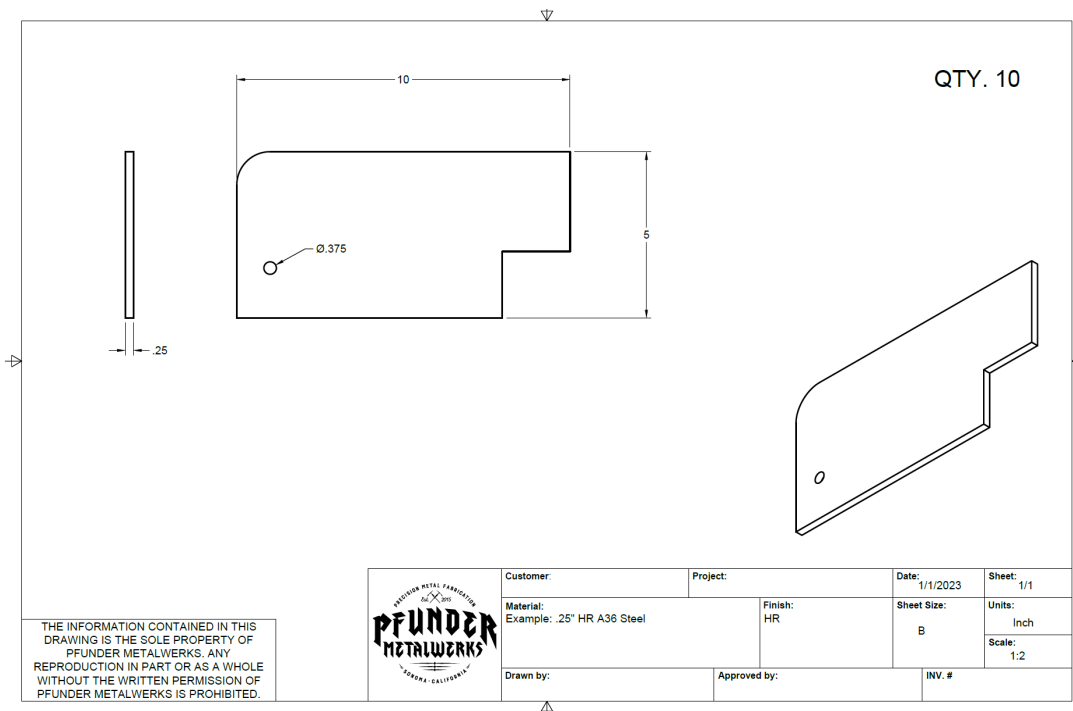




# Laser Cutting Part File Submission Instructions

1. Include individual .dxf or .stp files for **each part**.
2. Dxf must have all contours on a single sketch not on multiple sketches.
3. Include material type (thickness, alloy,) and finish (ex. HR, 2B, CR, #4, Mirror) for each part.
4. Include a pdf, jpg, or png of each part with two outermost dimensions and with one hole size if applicable. This is to confirm scale. See example below.
5. Include units of measurements in decimals and precision required. Only IN or MM.
6. Include quantities of each part.
7. If using Adobe Illustrator for design, please specify this as Illustrator typically does not export a true .dxf file designed for cutting, which will possibly require rework to process. Instead include the AI file and version used.
8. If using Sketchup any radius may cut as facets and not smooth radiuses. Please adjust accordingly and inform me if facets are not acceptable.

Nested parts are not acceptable. Our software calculates the ideal nesting for maximum yield and safety of cutting.



If you have questions, please call 707-938-7698 or email [pfundermetalwerks@gmail.com](mailto:pfundermetalwerks@gmail.com)